

# PHILIPS

Philips Hue wall  
switch module

Hue

Installs behind existing light  
switch

Customized scene selection

Control Hue lights with existing  
switch



046677571160



## Easy smart lighting

Installed behind light switches, the Philips Hue wall switch module lets you use existing switches with your Philips Hue smart lights. Your lights always stay powered on and reachable — and you can even use the switch to set multiple scenes on an individual light or in a Room or Zone.

### Personal scene setting

- Control lights, Rooms, or Zones
- Cycle through scenes by toggling the light switch

### Full control from smart device with Hue bridge

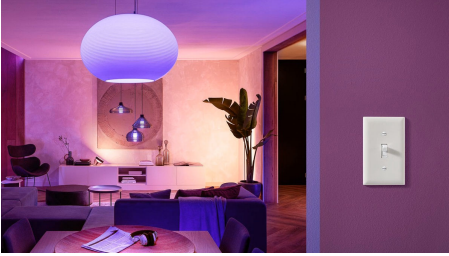
- Hue Bridge required

### Always connected to power

- Ensures your smart lights are always connected to power

# Highlights

## Control lights, Rooms, or Zones



Use your existing light switch to control the smart lights in a Room or Zone. Simply set up the wall switch module with the lights you'd like it to control in the Hue app.

## Cycle through scenes by toggling the light switch



Use your switch to set up to three different light scenes — just toggle the switch on and off to cycle through the scenes you choose.

## Hue Bridge required



The Philips Hue wall switch module requires a Hue Bridge (sold separately). The Hue Bridge also allows you to add up to 50 lights and 12 accessories throughout your entire home, create timers and routines, and control your lights from anywhere — inside or outside your home — with the Hue app.

## Ensures your smart lights are always connected to power



Never let your smart lights become “unreachable” when someone uses the standard light switch to turn off the lights. With the wall switch module, your lights are always connected to power.

# Specifications

## Design and finishing

- Color: White
- Material: Plastic

## Environmental

- Operational humidity: 0%<H<80% (non condensing)
- Operational temperature: 0°C - 35°C

## Extra feature/accessory incl.

- Batteries included: Yes
- ZigBee Light Link: No
- Centerpiece: Yes
- Centerpiece: Yes

## Guarantee

- 2 years: Yes

## Miscellaneous

- Especially designed for: Living- & Bedroom
- Type: Other

## Product dimensions and weight

- Height: 1.69 inch
- Length: 0.39 inch
- Width: 1.5 inch

### Service

- Warranty: 2 year(s)

### Technical specifications

- IP code: IP20
- Class of protection: Class III

### The switch

- IP rating: IP20

### What's supported

- Philips Hue App: IOS 15 and above,  
Android 10.0 and above

### Packaging dimensions and weight

- EAN/UPC - product: 046677571160
- Net weight: 0.03 kg
- Gross weight: 0.06 kg
- Height: 170 mm
- Length: 58 mm
- Width: 90 mm
- Material number (12NC):  
929003017103



Issue date: 2024-03-18  
Version: 0.245

© 2024 Signify Holding. All rights reserved. Signify does not give any representation or warranty as to the accuracy or completeness of the information included herein and shall not be liable for any action in reliance thereon. The information presented in this document is not intended as any commercial offer and does not form part of any quotation or contract, unless otherwise agreed by Signify. Philips and the Philips Shield Emblem are registered trademarks of Koninklijke Philips N.V.

[www.lighting.philips.com](http://www.lighting.philips.com)