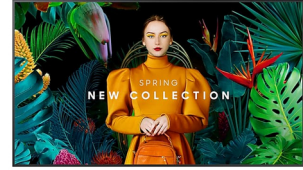


## Samsung LH85QBCEBGC Digital signage flat panel 2.16 m (85") LCD Wi-Fi 350 cd/m<sup>2</sup> 4K Ultra HD Black Tizen 7.0

**Brand :** Samsung

**Product code:** LH85QBCEBGCXGO

**Product name :** LH85QBCEBGC



- Ultra Slim Depth  
- Even bezel  
- Centered VESA Holes  
85", VA, 3840 x 2160, 4000:1, 10 ms, HDMI, USB, Wi-Fi, Bluetooth, 100-240 V, 50/60 Hz, 1904.3 x 1085.3 x 28.5 mm, 41.9 kg

Samsung LH85QBCEBGC. Product design: Digital signage flat panel. Display diagonal: 2.16 m (85"), Display technology: LCD, Display resolution: 3840 x 2160 pixels, Display brightness: 350 cd/m<sup>2</sup>, HD type: 4K Ultra HD. Wi-Fi. Operating system installed: Tizen 7.0. Product colour: Black

Display		Design	
Panel type	VA	Bezel width (bottom)	1.39 cm
Display diagonal *	2.16 m (85")	Bezel width (side)	1.39 cm
Display technology *	LCD	Bezel width (top)	1.39 cm
Display resolution *	3840 x 2160 pixels	<b>Performance</b>	
Display brightness *	350 cd/m <sup>2</sup>	Purpose *	Commercial
HD type *	4K Ultra HD	HDCP	✓
Touchscreen *	✗	HDCP version	2.2
Native aspect ratio	16:9	<b>Power</b>	
Response time	10 ms	Power consumption (typical) *	231 W
Contrast ratio (typical)	4000:1	Power consumption (sleep)	0.5 W
Dynamic contrast ratio marketing name	Mega Contrast	AC input voltage	100 - 240 V
Viewing angle, horizontal	178°	AC input frequency	50/60 Hz
Viewing angle, vertical	178°	<b>Computer system</b>	
Pixel pitch	0.487 x 0.487 mm	Internal storage capacity	8 GB
Horizontal scan range	30 - 81 kHz	Operating system installed	Tizen 7.0
Vertical scan range	48 - 75 Hz	<b>Weight &amp; dimensions</b>	
Haze rate	2%	Display width	1904.3 mm
<b>Ports &amp; interfaces</b>		Display depth	28.5 mm
HDMI ports quantity *	3	Display height	1085.3 mm
HDMI version	2.0	Display weight	41.9 kg
USB port *	✓	<b>Packaging data</b>	
USB ports quantity	2	Package width	2077 mm
Ethernet LAN (RJ-45) ports	1	Package depth	210 mm
RS-232 interface	✓	Package height	1222 mm
Infrared data port	✓	Package weight	53.9 kg
Remote (IR) input	1	<b>Operational conditions</b>	
PC Audio out	✓	Operating temperature (T-T)	0 - 40 °C
<b>Design</b>		Operating relative humidity (H-H)	10 - 80%
Product design *	Digital signage flat panel		
Placement supported *	Indoor		
Orientation	Horizontal/Vertical		

Design		Network	
Product colour *	Black	Ethernet LAN *	✓
Screen shape	Flat	Wi-Fi *	✓
VESA mounting *	✓	<b>Technical details</b>	
Panel mounting interface	600 x 400 mm	Compliance certificates	Electromagnetic Compatibility (EMC)
		<b>Other features</b>	
		Bluetooth	✓
		Safety	60950-1, 62368-1

## Catalog Object Cloud



Disclaimer. The information published here (the "Information") is based on sources that can be considered reliable, typically the manufacturer, but this Information is provided "AS IS" and without guarantee of correctness or completeness. The Information is only indicative and can be changed at any time without notification. No rights can be based on the Information. Suppliers or aggregators of this Information do not accept any liability with regard to the content of (web)pages and other documents, including its Information. The publisher of the Information can not be held liable for the content of 3rd party websites that are linking this Information or are linked to from this Information. You as the User of the Information are solely responsible for the choice and usage of this Information. You are not entitled to transfer, copy or otherwise multiply or distribute the Information. You are obliged to follow the directions of the copyright owner(s) with regard to the use of the Information. Exclusively Dutch law is applicable. With regard to price and stock data on the site, the publisher followed a number of starting points, which are not necessarily relevant for your private or business circumstances. Therefore, the price and stock data are only indicative and are subject to changes. You are personally responsible for the way you use and apply this information. As a user of the Information or sites or documents in which this Information is included, you will adhere to standard fair use including avoidance of spamming, ripping, intellectual-property violations, privacy violations, and any other illegal activity. Automated scraping, data mining, or harvesting for the purpose of training machine learning models, neural networks, or artificial intelligence systems is strictly prohibited without a commercial license.