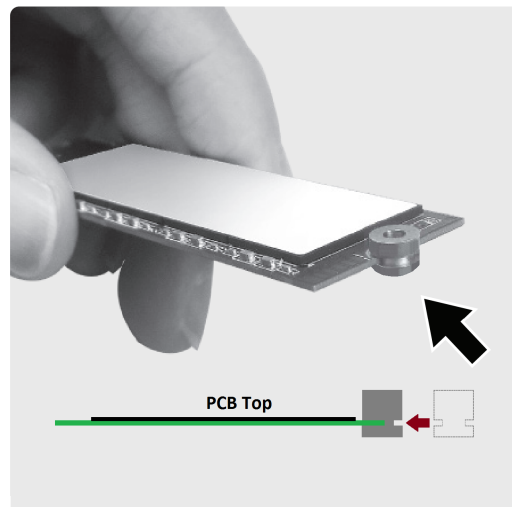




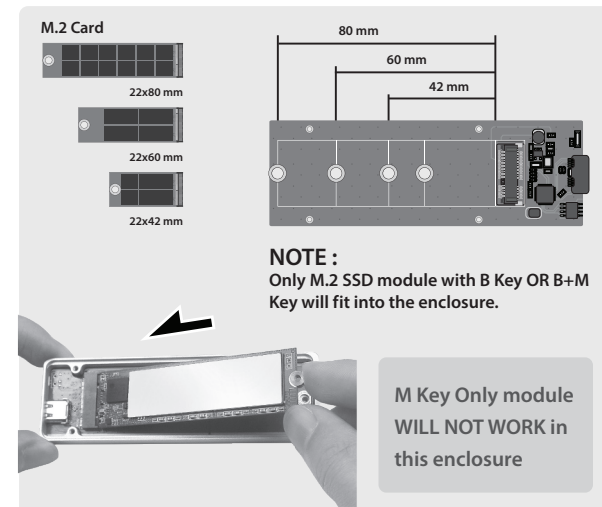
1. Verify the package contents.



2. Hold the enclosure at the angle shown to remove the cover. Note the cover latch for locking the cover on one end.



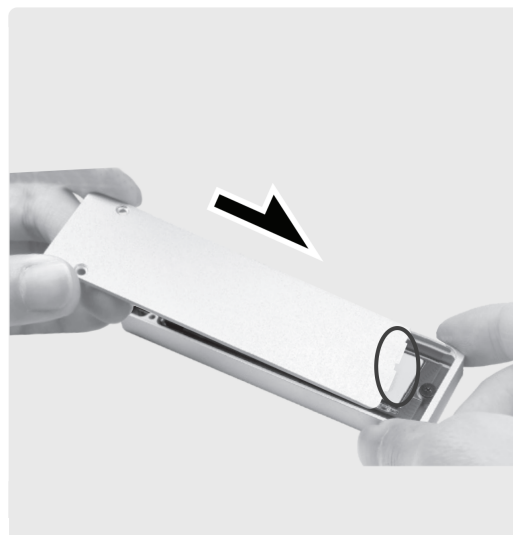
3. Mount the Spacer to the M.2 Module shown.



4. Your M.2 SSD module may come in different length. Insert the M.2 module into the M.2 interface at an angle shown.



5. Insert the screw thru the Spacer and fasten onto the M.2 holder.



6. Once the M.2 is secured, replace the cover shown. Note the cover latch.

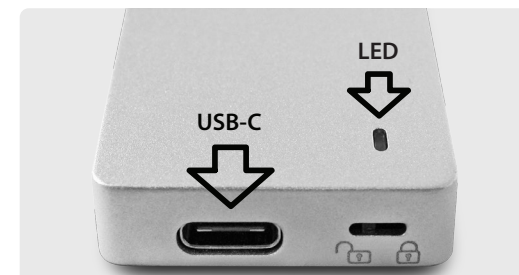


7. Secure two silver screws to hold the cover in place.

**Preparing the newly installed SSD for use:**  
All NEW USB storage needs to be initialized, partition and formatted for the Operating System you are using before it can store data. For Windows OS, use Disk Management and for OS X, use Disk Utility.

**If the M.2 is not new and have important data already on the memory module, DO NOT initialize, it will erase all the DATA.**

For detail, instruction refers to the FAQ "How to preparing a New storage, Hard Drive, or SSD for use with a system" on our website support section at [www.vantecusa.com](http://www.vantecusa.com)



**LED Activity :**  
RED - Read Only mode  
White - Read / Write mode

**NOTE :**  
For Write-Protection to function correctly, You MUST adjust Read Only or Read/Write mode before connecting USB to Computer