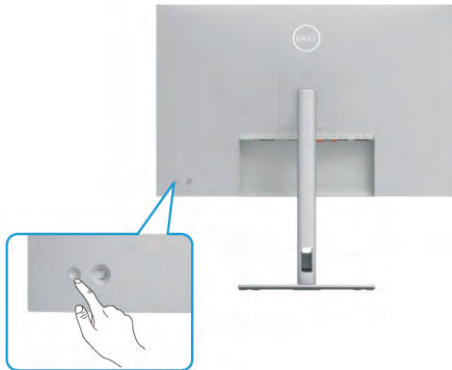


1. Disassembly Procedures:

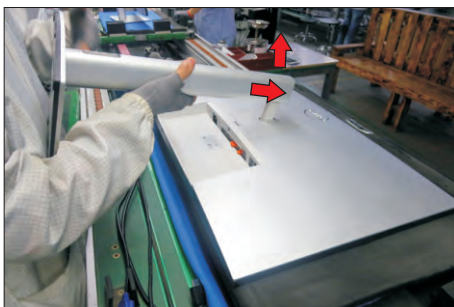
S1 Turn off power.



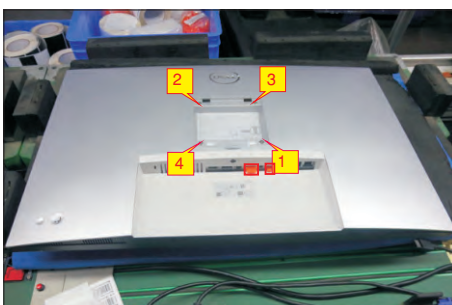
S2 Unplug external cables(power cable and video cable) from the monitor.



S3 Remove stand from the product.(Press the stand release button, lift the stand up and away from the monitor)

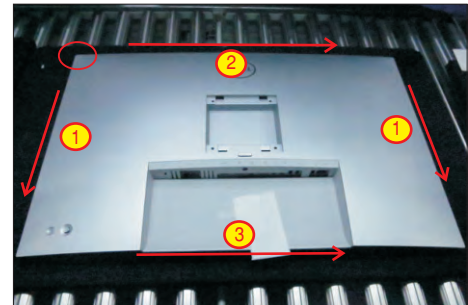


S4 Use a Philips-head screwdriver to remove 4pcs screws for unlocking mechanisms. Remove DP caps. (No.1~4 screw size=M4x11; Torque=11±1kgfxcM)



Tear off screen protector, then wedge your fingers between rear cover and the middle bezel on the corners of the top side of the monitor to release the rear cover, then use one hand to press the middle bezel, the other hand to pull up the rear cover in order of arrow preference for unlocking the rear cover.

S5

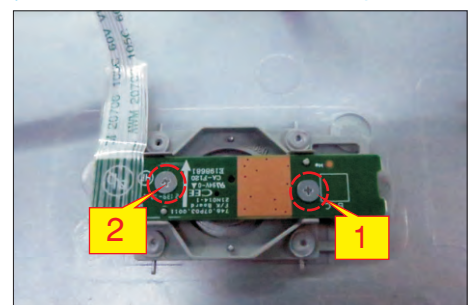


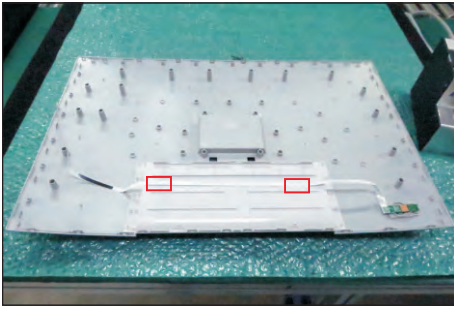
S6 Lift the rear cover up carefully. Disconnect the joystick key cable from the connector of the interface board, and then remove the rear cover and put it aside for later disassembling.



S7 Use a Philips-head screwdriver to remove 2pcs screw for unlocking the key board, then tear off the tapes and release the key board.

(No.1~2 screw size=M2x3.3, Torque=0.8~1kgfxcM)

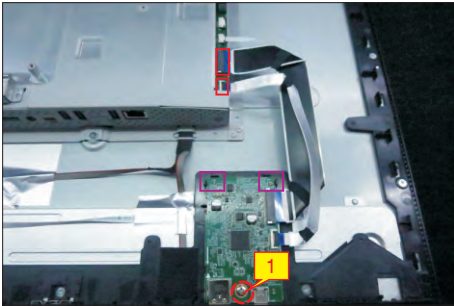




S8

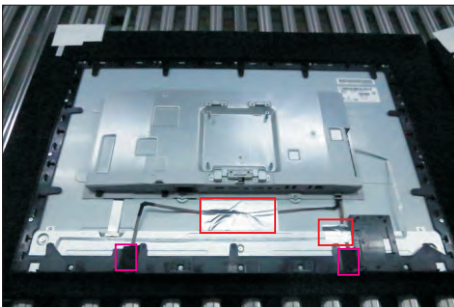
Use a Philips-head screwdriver to release one screw for unlocking the USB board, and disconnect the two USB cables and LED cable, then release the USB board from the hooks of the middle bezel.

(No.1 screw size=M3x5, Torque=4±0.5kgfxcM)



S9

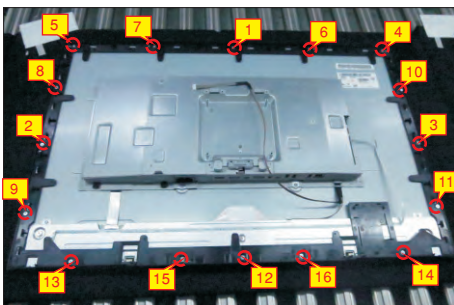
Tear off 2pcs aluminum foil for unfixing the two panel lamp cables, and then tear off 2pcs acetate tapes for uncovering the panel connectors, then disconnect the panel lamp cables from the two connectors of the panel module.



S10

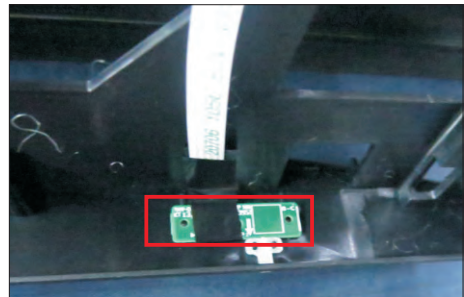
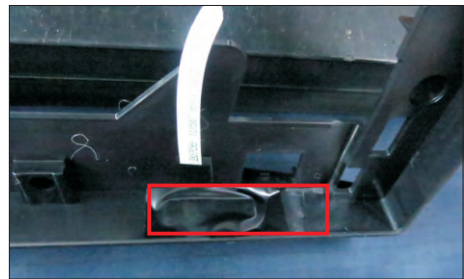
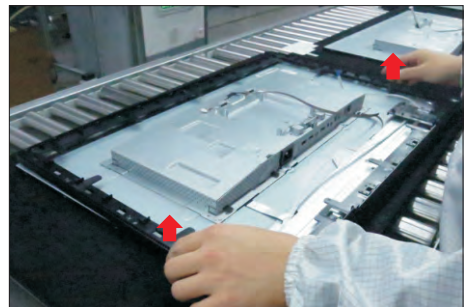
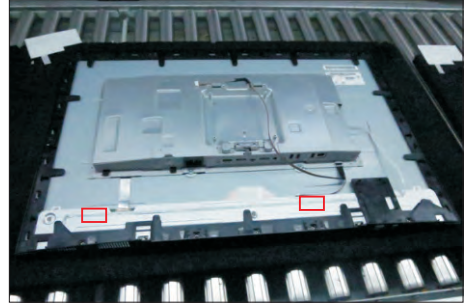
Use a Philips-head screwdriver to remove 16(11+5)pcs screws for unlocking the middle bezel with the panel module.

(No.1~16 screw size=M3x5, Torque=5±0.5kgfxcM)



S11

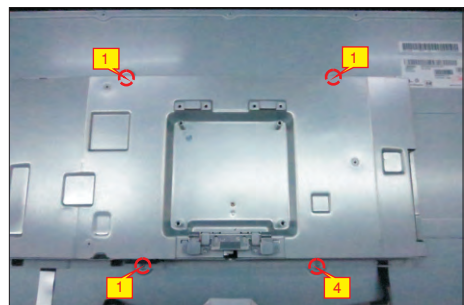
Tear off the tape on the back of panel module for releasing the LED cable, then lift up and take away the middle bezel, and put it on a cushion foam, and then tear off the mylar tape for releasing the LED board.



S12

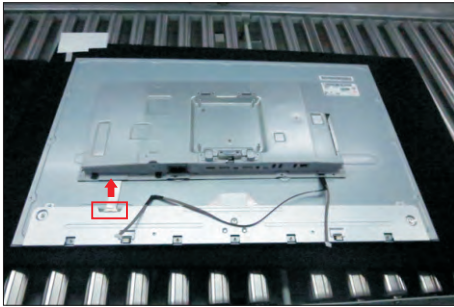
Use a Philips-head screwdriver to remove 4pcs screws for unlocking the bracket chassis module with the panel.

(No.1~4 Screw size= M3x5, Torque=5±0.5kgfxcM)



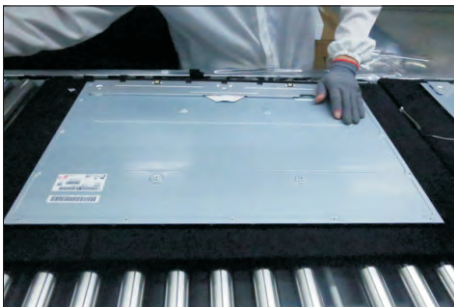
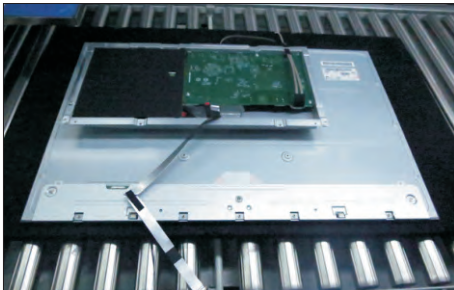
S13

Move up the bracket, then push the earing-lock and disconnect the LVDS cable away from the connectors of the panel module.



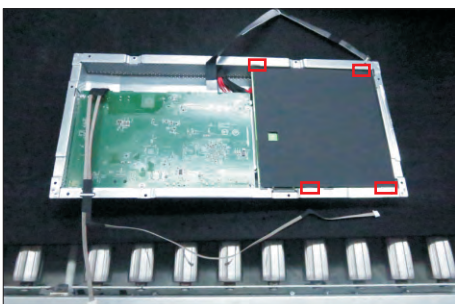
S14

Take away the bracket chassis module and then put the bracket chassis module on a protective cushion.



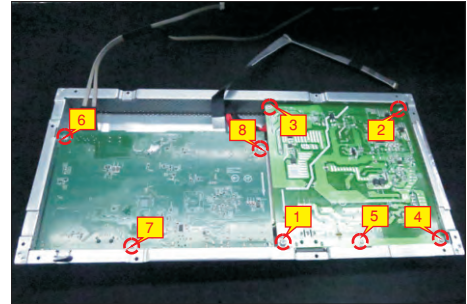
S15

Remove the Mylar tape from the hooks of the bracket chassis module.



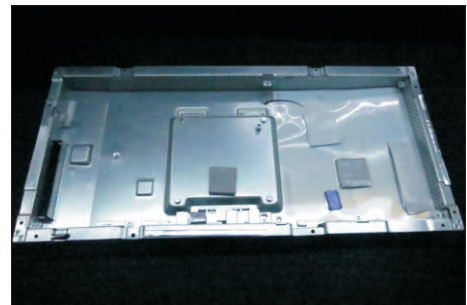
S16

Use a Philips-head screwdriver to remove 8pcs screws for interface board and power board. Release the panel lamp cable from the hook of the bracket. (No.1 screw size=M4x8, Torque=7±1kgfcm; No.2~8 screw size=M3x7.5, Torque=7±1kgfcm)



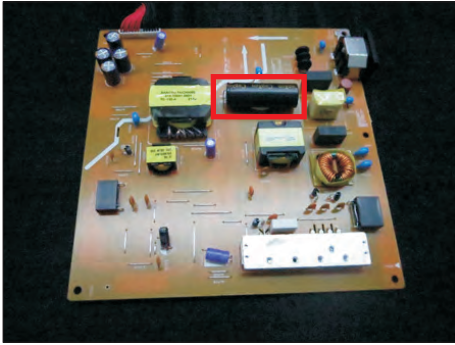
S17

Remove the power board board and interface board from the bracket chassis module carefully, and then disconnect all of the cables.

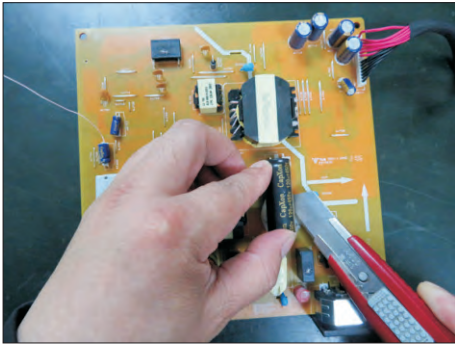


S18

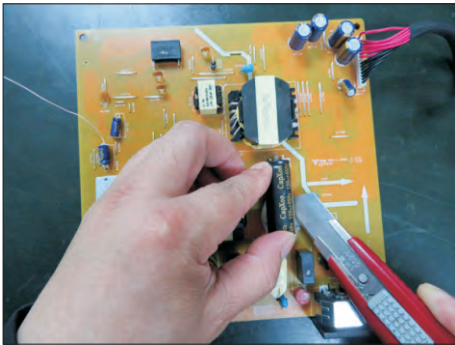
Remove electrolyte capacitors (red mark) from printed circuit boards.



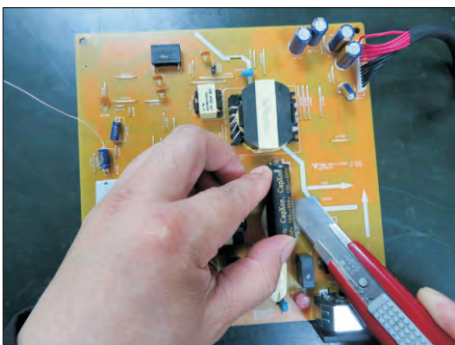
S18-1 Cut the glue between bulk cap. and PCB with a knife.



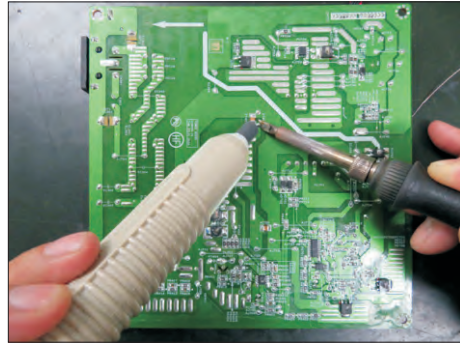
S18-2 Ensure cutting path within the glue, don't touch bulk cap. or PCB.



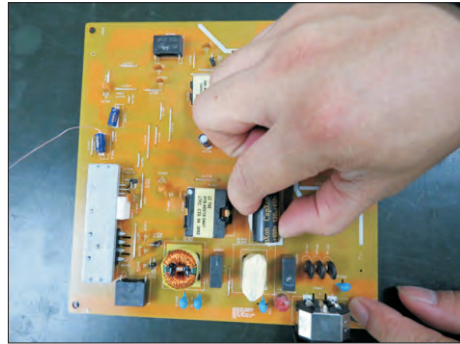
S18-3 Cut into the bottom of bulk cap. and pullit up carefully.



S18-4 Take out bulk cap. pin solder with soldering iron and absorber.



S18-5 Lift the bulk cap. up and away from the PCB.



2. Product material information

The following substances, preparations, or components should be disposed of or recovered separately from other WEEE in compliance with Article 4 of EU Council Directive 75/442/EEC.

Capacitors / condensers (containing PCB/PCT)	No used
Mercury containing components	No used
Batteries	No used
Printed circuit boards (with a surface greater than 10 square cm)	Product has printed circuit boards (with a surface greater than 10 square cm)
Component contain toner, ink and liquids	No used
Plastic containing BFR	No used
Component and waste contain asbestos	No used
CRT	No used
Component contain CFC, HCFC, HFC and HC	No used
Gas discharge lamps	No used
LCD display > 100 cm ²	Product has an LCD greater than 100 cm ²
External electric cable	Product has external cables
Component contain refractory ceramic fibers	No used
Component contain radio-active substances	No used
Electrolyte capacitors (height > 25mm, diameter > 25mm)	Product has electrolyte capacitors (height > 25mm, diameter > 25mm)

3. Tools Required

List the type and size of the tools that would typically can be used to disassemble the product to a point where components and materials requiring selective treatment can be removed.

Tool Description:

- Screwdriver (Phillip head) #1
- Screwdriver (Phillip head) #2
- Penknife
- Soldering iron and absorber