

# SPECIFICATION SHEET



## 12 AWG C20 to C19 Color Power Cord

- Color coded
- Constructed of heavy duty 12AWG conductors
- Rated up to 250V 20A
- UL listed and TAA compliant
- Lifetime Warranty

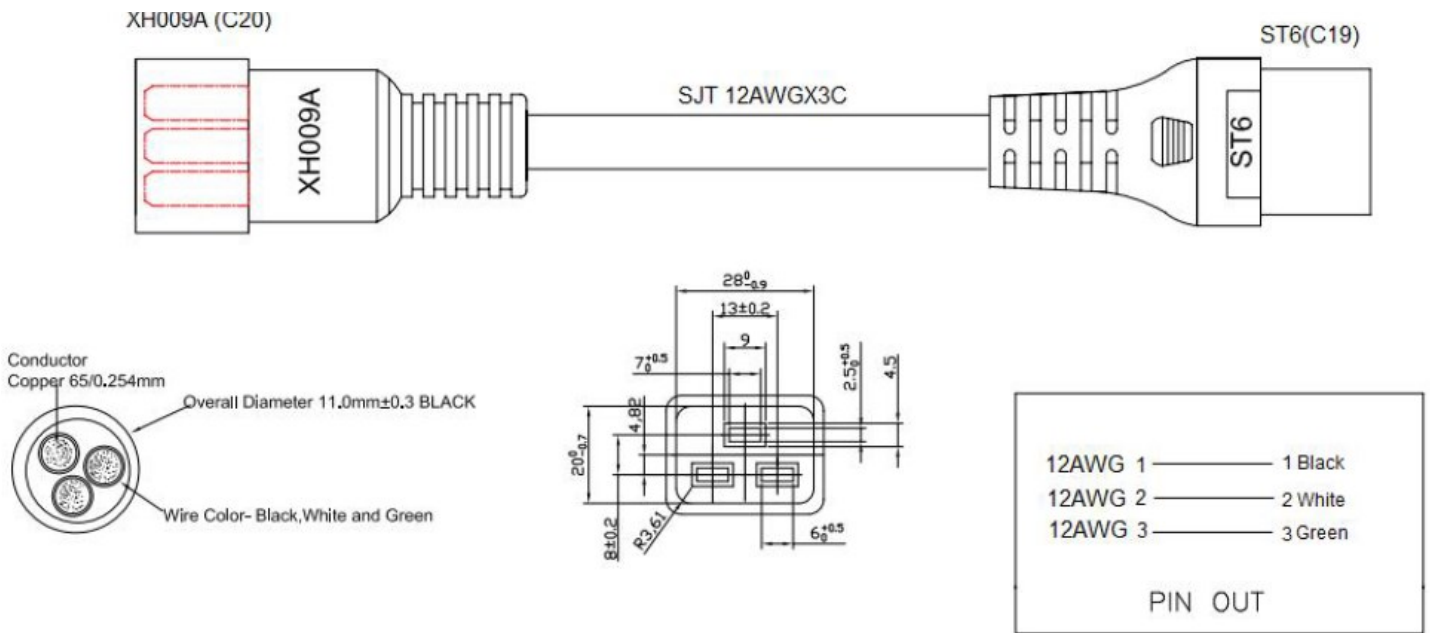
# Specifications: 12 AWG C20 to C19 Color Power Cord

## Electrical Specifications:

Voltage Rating:	250V
Amperage Rating:	20A
Conductor:	65/ 0.254mm 12AWG

## Physical Specifications:

Overall Diameter:	11.0mm ± 0.3mm
Operating Temperature:	105°C
Certifications:	UL 817, RoHS, REACH



## Specifications: 12 AWG C20 to C19 Color Power Cord

Length	Blue	Red	Orange	Green	Yellow	White
1ft	17708	17709	17710	17711	17712	17713
2ft	17714	17715	17716	17717	17718	17719
3ft	17720	17721	17722	17723	17724	17725
4ft	17726	17727	17728	17729	17730	17731
5ft	17732	17733	17734	17735	17736	17737
6ft	17738	17739	17740	17741	17742	17743
8ft	17744	17745	17746	17747	17748	17749
10ft	17750	17751	17752	17753	17754	17755



**CABLES TO GO**

Cables To Go  
3555 Kettering Blvd.  
Moraine, OH 45439  
Phone: 800.287.2843  
[www.c2g.com](http://www.c2g.com)

Follow Us

