

DATA SHEET



Dual HDMI® Pass Through Decorative Wall Plate

Complete an in-wall HDMI cabling installation with this wall plate featuring flexible HDMI pigtails

OVERVIEW

The Dual HDMI Pass Through Decorative Wall Plate is perfect for the transition to in-wall cabling. This solution offers a clean, professional look and is ideal for classrooms, conference rooms and houses of worship.

The HDMI pass through ports includes thin, flexible HDMI pigtails that accommodates the tight bend radius required for installations within a standard junction box.

This wall plate is designed for durability and a long life in commercial environments where constant wear and tear causes damage.

FEATURES

- Supports 2 HDMI audio/video signals
- Flexible HDMI pigtails for easy installation in a wall box
- Fits standard electrical boxes
- Compatible with decorative trim plates

ITEM DESCRIPTION

39875 Dual HDMI Pass Through Decorative Wall Plate - Aluminum

DATA SHEET

SPECIFICATIONS:

Dual HDMI Pass Through Decorative Wall Plate

ELECTRICAL SPECIFICATIONS:

- Voltage Rating: 30V
- Nominal Capacitance: 58PF/M
- Conductor Resistance: @ 20[D]C max
- Insulation Resistance: 10M[OHM]/km @ 20°C DC 500V
- Attenuation:
 - @ 0.30~825MHz 5dB/3.0M
 - @ 825~2475MHz 12dB/3.0M
 - @ 2475~4125MHz 20dB/3.0M
 - @ 4125~5100MHz 25dB/3.0M

PHYSICAL SPECIFICATIONS:

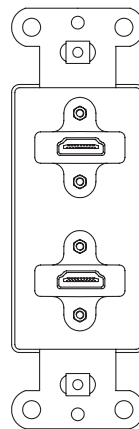
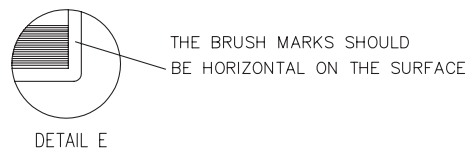
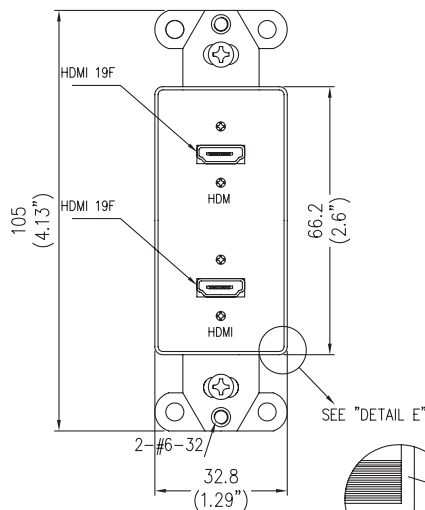
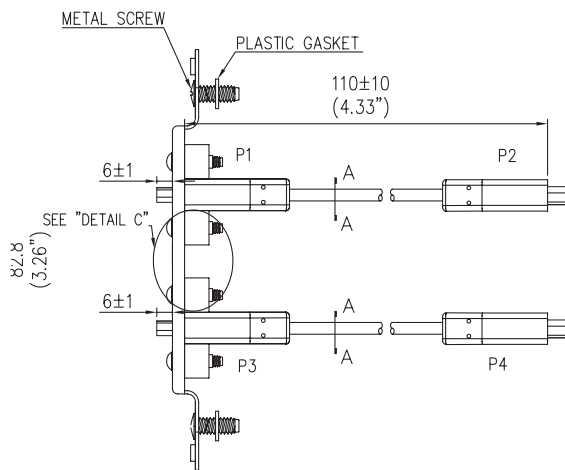
- Jacket: Black PVC
- Jacket Thickness: 0.51mm
- Minimum Bend radius: 30mm
- Approvals: CE and conforms to 2011/65/EU ROHS 2

Conductor (2 Conductors, 5 Pair):

- Conductor: 30AWG(7/0.10TC)X5PR
- Insulation: FM-PE, ID: 0.75±0.05mm
- Color: Brown/White, Red/White, Orange/White, Green/White, Blue/White
- Drain: 30AWG(7/0.10TC)X5
- Shield: AL Foil WrapX5
- Braid: (16/5/0.08TC)X5

Conductor (4 Conductors):

- Conductor: 30AWG(7/0.10TC)X4C
- Insulation: PP, ID: 0.55±0.05mm
- Color: Red/Yellow/Orange/White
- Drain: 30AWG(7/0.10TC)
- Shield: AL Foil Wrap



C2G
A brand of **legrand**

3555 Kettering Blvd.
Moraine, OH 45439
Phone: 800.CABL.911
www.c2g.com

Follow Us

